



GMT MONTHLY MEMBERSHIP PROGRESS REPORT

Results as of: 5/31/2026

Multiple District 25

LOCATION: INDIANA

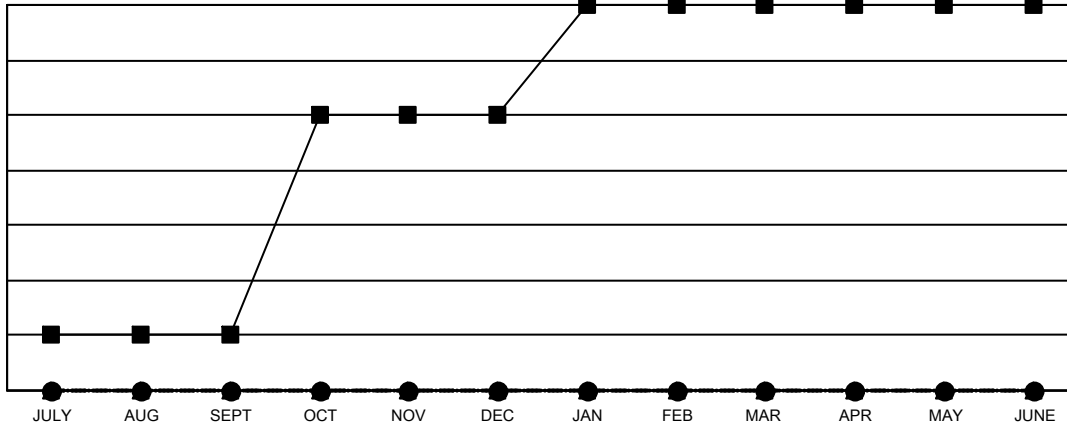
GMT: OPEN

GMT CA 1

| Clubs | | | |
|-----------------------|---------------|-----------|---------------|
| RESULTS FOR 2025-2026 | | | |
| QUARTER | NEW CLUB GOAL | NEW CLUBS | DROPPED CLUBS |
| JULY/AUG/SEPT | 1 | 0 | 0 |
| OCT/NOV/DEC | 4 | 0 | 2 |
| JAN/FEB/MAR | 2 | 0 | 0 |
| APR/MAY/JUNE | 0 | 0 | 3 |

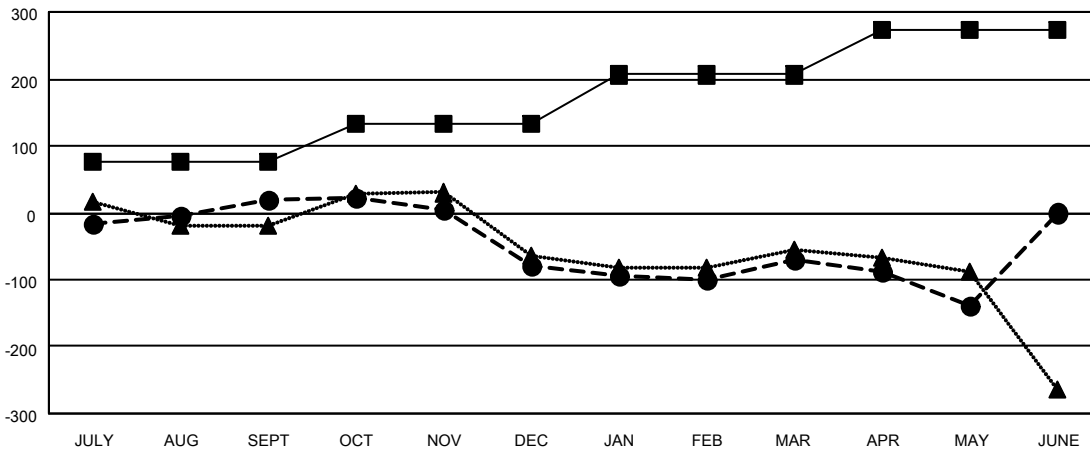
| Members | | | |
|-----------------------|------------------------|----------------------|--|
| RESULTS FOR 2025-2026 | | | |
| QUARTER | MEMBER GROWTH NET GOAL | MEMBER GROWTH ACTUAL | DROPPED MEMBERS ACTUAL (including transfers) |
| JULY/AUG/SEPT | 75 | 208 | 171 |
| OCT/NOV/DEC | 58 | 146 | 231 |
| JAN/FEB/MAR | 73 | 165 | 135 |
| APR/MAY/JUNE | 67 | 119 | 172 |

GOALS AND ACTUAL NEW CLUBS CUMULATIVE



- - CURRENT YEAR GOALS FOR NEW CLUBS
- - CURRENT YEAR ACTUAL NEW CLUBS
- ▲ - LAST YEAR ACTUAL NEW CLUBS

GOALS AND ACTUAL MEMBERS CUMULATIVE



- - MEMBER GROWTH NET GOAL
- - MEMBER GROWTH ACTUAL
- ▲ - LAST YEAR MEMBERSHIP ACTUAL

| | | |
|-------------------------|--|--|
| DROPPED CLUBS: 5 | 166 CLUBS OF 315 ADDED 1 OR MORE NEW MEMBERS | GENDER DISTRIBUTION MALE 5,094 (65.84%) FEMALE 2,643 (34.16%) |
| | DROPPED MEMBERS DECEASED 130 CLUB CANCELLED 13 OTHER 562 TOTAL 705 | CLICK HERE FOR CUMULATIVE MEMBERSHIP DATA |